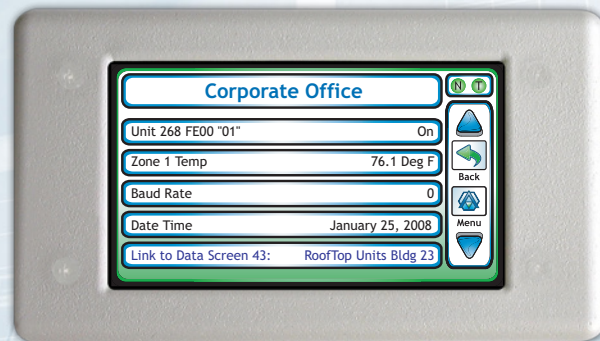


BBC-SD™ BACnet® Building Controller - Small Display

The BACnet Building Controller Small Display (BBC-SD) is a compact, wall mountable, and addressable network display device for MS/TP-based networks that enables users to quickly monitor their HVAC system, and easily make changes to the way their building is controlled. The BBC-SD features a touchscreen interface with permission-based menu icons allowing for simple navigation to read and write values, view alarms, grouped data, and point descriptions. The BBC-SD is easily configured via the Windows® based BBC SD-Pro™ utility.

FEATURES

- Able to automatically display and modify up to 150 BACnet object properties
- Can manually address, view, and modify any data point on the BACnet network
- 50 configurable data screens containing live BACnet network data and/or hyperlinks to other data screens allow unique point groupings
- 12-bit color, 480x272 pixel TFT-based touchscreen local user interface for display and modification
- Configurable header information
- Multi-tiered, icon-driven screen navigation
- Available "Home Screen", adaptable to display frequently viewed or accessed data
- Intuitive screen calibration
- Multi-level numeric password-based access protection
- Able to "sniff" network traffic, store and display up to 128 alarms
- Flash program upgradable through use of standard SD/MMC card port
- Standard text representation of specified events
- Programmable display dimming functions to protect against image burn
- Non-volatile memory stored on the BBC-SD for backup and cloning over the network
- Automatic discovery of all master and slave devices
- Temporary address override allows interrogating different controllers without redeploying the configuration file
- Configured using BBC-SD Pro for Windows via the MS/TP network or SD card
- Automatically sets date & time



Home Screen



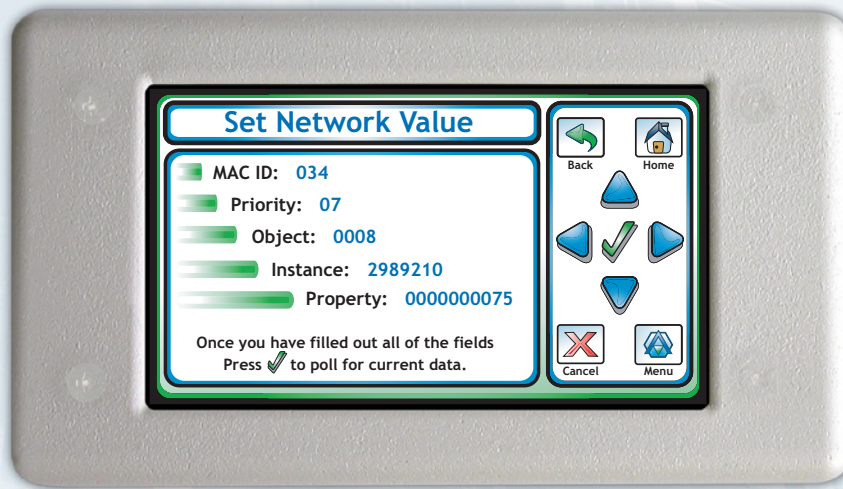
Main Menu

BBC-SD-PRO CONFIGURATION UTILITY

BBC-SD Pro is a PC-based configuration environment used to setup and configure the operational parameters of the BBC-SD.

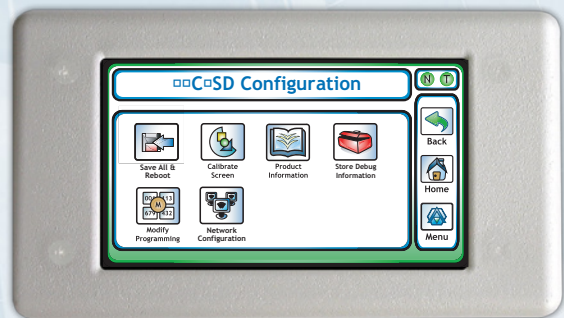
Users can define key data from BACnet MS/TP units which will be displayed on the screen for monitoring and modification. Once all configuration parameters have been defined, a configuration file can be generated (saved) and transported to the BBC-SD through the use of its local SD-card socket or via BACnet File Services.





Data Entry Screen

- Token, and network activity icons
- 50 customizable 24-character menu text headers
- Customizable long (150 character) and short (24 character) text description for each datapoint
- Chemically resistant “Kydex” plastic case, mountable on both US and Euro switch boxes
- Touch screen protected by a chemically resistant polyester membrane
- Advanced MS/TP diagnostics utilities
- Adjustable volume control
- Up to 16 linked BACnet schedules and calendars (8 each)
- 32 analog value & 32 binary value BACnet objects for remote data display



Configuration Screen



NB-SD SPECIFICATIONS

Processor	high-speed 32-bit ARM processor	SD/MMC Card Socket	supports SD card up to 2 GB
Touch Screen Display	backlit 16:9 widescreen TFT color LCD 480 x 272 pixels	Operating Temp	32 to 122° F (0 to 50°C)
Local Memory Storage	8 MB onboard flash chip	Relative Humidity	0 to 90% non condensing
SRAM	1 MB RAM chip	Power Requirements	14-29 VAC/DC, 50/60 Hz; 4W maximum; Class 2
Communication	BACnet MS/TP Master -9.6, 19.2, 38.4, 57.6, 76.8, 115.2k	Agency Listings	UL listed 916, Management Equipment, Energy (PAZX) FCC rules Part 15 Class B computing device Complies with CE directive and standards
Features	revert button / reset button		
Overall Size	6.0 x 3.4 x 1.0 in. (15.24 x 8.64 x 2.54 cm) mounting holes for 2x4 utility or 2x2 K power box		

American Auto-Matrix is a Service-Disabled Veteran-Owned Small Business / Woman-Owned Business (SAM Cage # 4LL80)

American Auto-Matrix
One Technology Lane
Export, PA 15632

TEL (1) 877-AAM-HVAC
FAX (1) 724-327-6124

AAM@AAMATRIX.COM

WWW.AAMATRIX.COM

Appropriate safety precautions must always be taken when operating or maintaining equipment connected to any American Auto-Matrix product, licensed materials, or hardware. AAM assumes no responsibility or liability for any injuries or damage to any persons or property resulting from the use of these products. As always, these products should be used in the manner they are intended. American Auto-Matrix, the American Auto-Matrix logo, the Rocket-A, and Smart Building Solutions are registered trademarks of American Auto-Matrix. BACnet is a registered trademark of ASHRAE. BTL is a registered trademark of The BACnet International. The CE Mark is a sign of Safety and Conformity to the EU Directives. UL and the UL logo are trademarks of UL LLC. USGBC and related logo is a registered trademark of US Green Building Council and is used with permission.

© 2014 AMERICAN AUTO-MATRIX



**American Made
American Owned**